



## Radius Series NM NAMUR 5/2 - 3/2 Solenoid Valve

### Features:

Combination 3 way/ 4 way 3/2 • 5/2 solenoid valve that directly mounts to all NAMUR interface actuators. Standard features include a manual override, a safety position by mechanical spring. Pilots both spring return and double acting actuators.

### Specifications:

Pressure range: 20-120 psi

Media Temperature:

-20-140 ° f

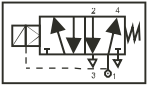
Optional to -40 ° f

Body: Extruded Aluminum

Seal: BUNA N

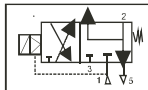
Cv1.4

### Function:



5/2 configuration for double-acting actuators.

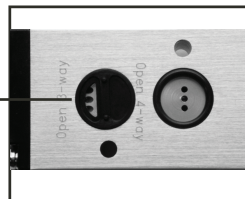
De-energized state, with supply to port 1, flow is directed to port 4 and port 2 is vented to atmosphere via port 3.



3/2 configuration for spring return actuators.

De-energized state, with port 3 sealed, supply port is blocked and port 2 exhaust is fed back to port 4 with excess vented to atmosphere via port 5.

Specially designed rubber directional plate easily converts the valve to either a five ported four way or a three ported three way valve.



### STANDARD



### EXPLOSION PROOF



### ATEX



**Radius LLC is ISO 9001:2015 Certified.**



## Radius Series NM NAMUR 5/2 - 3/2 Solenoid Valve

### PART NUMBER SYSTEM

NM STD 110 AC - 0 0 0 0

#### series

RADIUS Series NM NAMUR  
mount, combination 5/2  
and 3/2 pilot valve  
(By adjustable gasket)

#### type

STD = standard (CSA)  
ATX = ATEX  
EXP = explosion proof (FM)  
ISF = intrinsically safe  
OTH = other  
NCL = no coil

#### voltage

012  
024  
048  
110  
230  
OTH  
NON

#### current

AC  
DC  
NA

#### connections

0 = NPT  
1 = metric

#### LED

0 = none  
1 = LED

#### muffler

0 = none  
1 = muffler

#### speed control

0 = none  
1 = speed controls  
2 = Speed control block  
(Standard on FM units)

### STANDARD VERSION (CSA app.)

#### Electrical:

Voltage (+/-10%): 24VDC  
120VAC @ 60Hz  
240VAC @ 60Hz  
110VAC @ 50Hz  
230VAC @ 50Hz

OTHER COIL VOLTAGES AVAILABLE UPON  
REQUEST.

Power consumption: DC 4.8W  
AC @60Hz 6.9VA  
AC @50Hz 8.5VA

Duty cycle: 100% continuous service

Insulation class: F

Connection: 1/2" NPT conduit entry

Protection class: IP65  
NEMA types 1,2,3,  
3S,4 and 4X.

#### Connector:

Standard: DIN industrial form,  
suitable for all voltages  
up to 250V AC/DC.

Optional: LED AC/DC 24V  
LED AC/DC 110V  
LED AC/DC 230V

OTHER CONNECTOR OPTIONS AVAILABLE UPON  
REQUEST.

### EXPLOSION PROOF VERSION North American Version

#### Electrical:

Voltage (+/-10%): 24VDC  
120VAC @ 60Hz  
240VAC @ 60Hz  
110VAC @ 50Hz  
230VAC @ 50Hz

OTHER COIL VOLTAGES AVAILABLE UPON REQUEST.

Power consumption: DC 4.8W  
AC @60Hz 6.9VA  
AC @50Hz 8.5VA

Duty cycle: 100% continuous service

Insulation class: H

Connection: 1/2" NPT conduit

Protection class: IP65  
NEMA types 1,2,3,  
3S,4,4X,7,8 and 9.

Approvals: CSA, FM and NEC

#### Hazardous Locations:

- Ex m II T4 and Division 1
- Class I, Group A,B,C and D
- Class II, Group E,F and G
- Class III
- Tested according to CAN/CSA-E79-0-95  
and CAN/CSA-E79-18-95 for CSA, ac-  
cording to ANSI/ISA-S12.00.01-1999  
and ANSI/ISA-S12.23.01-1998 for FM

### ATEX VERSION European Explosion Proof

#### Electrical:

Voltage (+/-10%): 12 and 24VDC  
110VAC 50/60Hz  
230VAC 50/60Hz

OTHER COIL VOLTAGES AVAILABLE UPON REQUEST.

#### Power consumption:

Temp Class T4,  
24VDC, Rated power 5.2W

Temp Class T5,  
110V 50/60Hz, Rated power 3.0VA

Temp Class T6,  
220V 50/60Hz, Rated power 2.5VA

Duty cycle: 100% continuous service

Insulation class: F

Connection: Encapsulated Coil and  
Connector, with Cable

Protection class: IP65

Approvals: PTB ATEX

#### Hazardous Locations:

- II 2G EEx m II T6, T5 or T4 approved
- IEC Ex m II T6, T5 or T4 approved
- Coils are approved according to EN 50  
014:1997 +A1+A2 and EN50028:1987 by  
the Physikalisch-Technischen Bundesan-  
stalt (PTB).

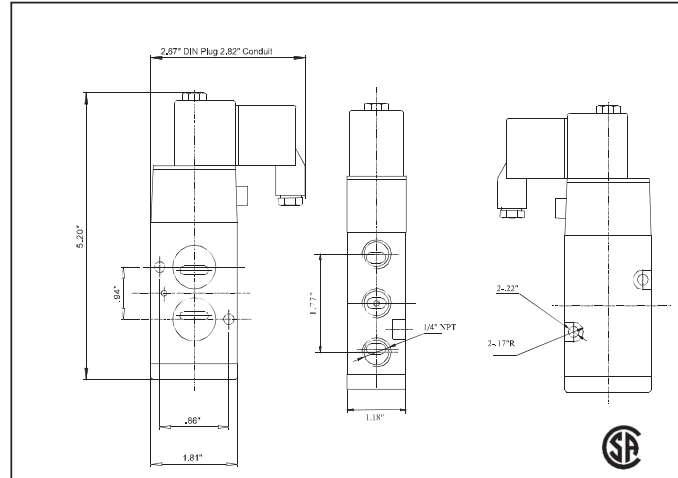
Intrinsically Safe Version also Available



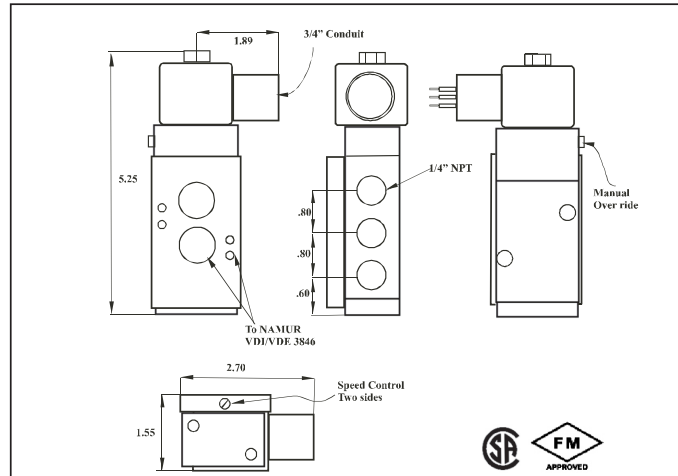
# Radius Series NM NAMUR 5/2 - 3/2 Solenoid Valve

## DIMENSIONS:

Standard



Explosion  
Proof



ATEX

